

**DOCUMENT 00 90 00  
ADDENDUM**

**ADDENDUM NO. [1]            Date: January 16, 2018**  
**ABBOTSFORD SCHOOL DISTRICT**  
**ELEMENTARY & MIDDLE SCHOOL ADDITION**  
**510 HEMLOCK STREET**  
**ABBOTSFORD, WISCONSIN 54405**  
**HSR PROJECT NO. 17060**

**FROM:**            HSR Associates, Inc  
                  100 Milwaukee Street  
                  La Crosse, WI 54603  
                  (608) 784-1830

**To:**            Prospective Bidders

This addendum forms a part of the Contract Documents and modifies the original Bidding Documents dated January 2018. Acknowledge receipt of this Addendum in the space provided on the bid form. Failure to do so may subject the Bidder to disqualification.

This Addendum consists of [2] pages, and [1] 30 x 42 drawings.

**CHANGES TO BIDDING REQUIREMENTS AND CONDITIONS OF THE CONTRACT:**

1. Section 00 01 10 TABLE OF CONTENTS
  - a. Division 8: Add Section 08 71 00. Section is included in digital PDF but not shown in TOC.

**CHANGES TO SPECIFICATIONS:**

2. Section 04 20 00 UNIT MASONRY
  - a. 2.02, A, 1, a, 2): Brick 2 is a Sioux City Brick.

**CHANGES TO DRAWINGS**

3. Sheet C100 LAYOUT PLAN
  - a. At the Middle School plan (east building), the new concrete slab shown at west end of new addition shall follow detail 1C100.
4. Sheet A100 ELEMENTARY FLOOR PLAN
  - a. 1A100: In Corridor A188, at removal note 22, patch and paint wall to match adjacent finish.
5. Sheet A120 ROOF PLAN
  - a. 1A120: Change slope at north half of roof to "1/4 inch/foot".
  - b. 2A120: Roof insulation thickness at roof drain shall be 2 inches. The center portion cricket shall taper from 4 inches to 2 inches at drain.
6. Sheet A501 SECTION DETAILS
  - a. 1A501: At all parapet locations separate all wood in contact with CMU and brick with 15# felt or similar bond break.

- b. 2A501: The rigid insulation indicated shall be 1 ½ inch extruded board, R 5/inch. Install 6 inch R19 blanket over top of framing.
  - c. 6A501: Extend gypsum board one side of enclosure to deck. Seal continuously with acoustical sealant.
7. Sheet M100R ELEMENTARY SCHOOL HVAC PLAN 30 x 42 attached hereto.
- a. Changes clouded on plan.

**PRIOR APPROVALS**

- 1. Section 04 72 00 – CAST STONE: Marcstone

**END OF DOCUMENT 00 90 00**



Consultant:

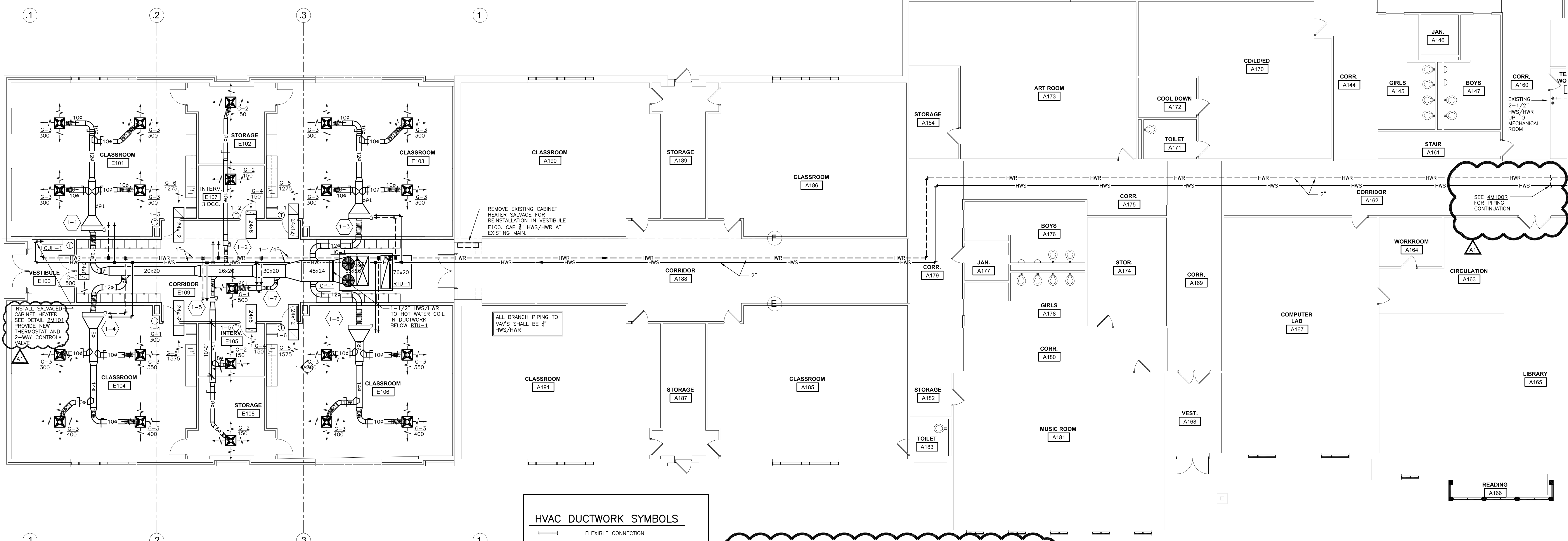
Project Location: 510 W HEMLOCK ST.  
ABBOTSFORD, WI 54405

Project Title:  
HSR Project Number: 17060  
Project Date: JAN 2018  
Drawn By: KKL  
Key Plan:

Revisions:  
No. Description Date  
A1 ADDENDUM #1 1/16/2018

Graphic Scale:  
VARIES  
Last Update: 1/16/2018

M100R



ROOFTOP HEATING/COOLING UNITS

UNIT NO.	LOCATION	COL. REF. NO.	MODEL NUMBER	NOM. TONS	TOTAL SEN. CLG. MBH NET	AMB. TEMP.	ENT. TEMP.	REFR. TYPE	CFM	ESP.	FILTER TYPE	MINIMUM CIRCUIT AMPACITY	VOLTAGE/ PHASE	MIN. O.A. X	REMARKS REF. NO.
RTU-1	ROOF/E109	HC-1	TZD-180-F-3	15	182	95	80/67	R-410A	6,500	1.5	MERV 13	73	208/3	30.0	1,2,3,4,5

REMARKS:  
1. SELECTION BASED ON PRODUCT BY TRANE VOYAGER #FLEX  
2. OUTSIDE AIR ECONOMIZER (MODULATING 0 - 100%)  
3. UNIT SHALL BE A DOWN-FLOW CONFIGURATION WITH 20.1 IEER (INTEGRATED ENERGY EFFICIENCY RATIO) FOR 15-TON UNIT  
4. UNIT SHALL HAVE DUAL SCROLL COMPRESSORS, INCLUDE POWERED CONVENIENCE OUTLET, 2-INCH (MERV 13) PLEATED FILTERS, POWERED EXHAUST, CLOGGED FILTER/FAN FAILURE SWITCH AND HINGED ACCESS DOORS  
5. INCLUDE FUSED DISCONNECT SWITCH AND INSULATED FACTORY ROOF CURB

HOT WATER COILS

COL. REF. NO.	SERVES	COIL SIZE (H x W)	TYPE	NO. OF ROWS	MAX. COIL VFD (IN WC)	G.P.M.	ENT. TEMP.	HW. TEMP.	ENT. AIR TEMP.	LVG. AIR TEMP.	TOTAL MBH	FACE VFL. (FPM)	AIR PRESS. DROP (IN WC)	REMARKS REF. NO.
HC-1	RTU-1	24 X 48	5W	1	0.66	12.8	180	20.0	32.8	75	128.3	369	0.04	1,2,3,4

REMARKS:  
1. SELECTION BASED ON PRODUCT BY TRANE.  
2. SEE DETAIL 2M100 FOR COIL PIPING INSTALLATION.  
3. COIL TUBE THICKNESS AND MATERIAL SHALL BE .024" COPPER.  
4. FACE VELOCITY AT 2950 CFM HEATING CFM.

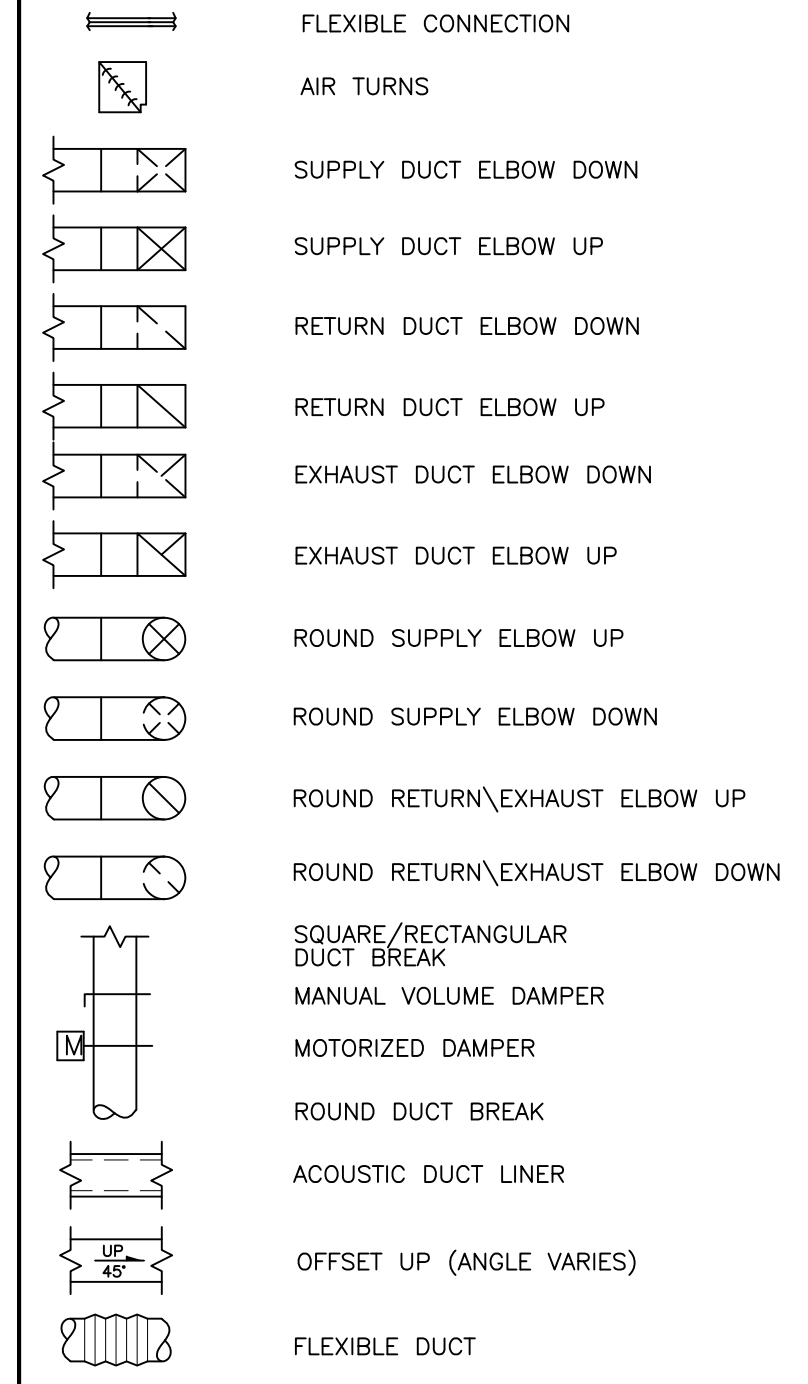
VAV BOXES

UNIT NO.	SERVES ROOM	MODEL NO.	INLET DUCT SIZE	MAX. CFM	MIN. COOLING CFM	MIN. HEATING CFM	MAX. UNIT SP. DROP	DOWNSTREAM UNIT SP. DROP	NC LEVEL (8000 RADIATED)	COL. SIZES AND CAPACITY DATA										REMARKS REF. NO.
										MAIN COL. TYPE	HTG. FLOW RATE (GPM)	COL. FLUID PD. (FT H <sub>2</sub> O)	ENT. TEMP.	LVG. HW. TEMP.	ENT. AIR TEMP.	ROOM HTG. SETPOINT	TOTAL MBH			
1-1	E101	VCWF	12" x 12"	1200	360	500	0.32	0.25	<30	2-ROW	1.9	0.2	180	160	55.0	75	33.3	1,2,3		
1-2	E102/E107	VCWF	8" x 8"	300	100	150	0.05	0.25	<30	1-ROW	0.8	1.3	180	160	55.0	75	8.7	1,2,3		
1-3	E103	VCWF	12" x 12"	1200	360	500	0.34	0.25	<30	2-ROW	1.2	0.1	180	160	55.0	75	28.3	1,2,3		
1-4	E104	VCWF	12" x 12"	1500	450	700	0.49	0.25	<30	2-ROW	1.7	0.2	180	160	55.0	75	37.6	1,2,3,4		
1-5	E105/E108	VCWF	8" x 8"	300	100	150	0.05	0.25	<30	1-ROW	0.8	1.3	180	160	55.0	75	8.7	1,2,3		
1-6	E106	VCWF	12" x 12"	1500	450	700	0.46	0.25	<30	2-ROW	1.3	0.1	180	160	55.0	75	32.5	1,2,3		
1-7	E109	VCWF	8" x 8"	500	150	250	0.22	0.25	<30	2-ROW	0.5	0.5	180	160	55.0	75	14.2	1,2,3		

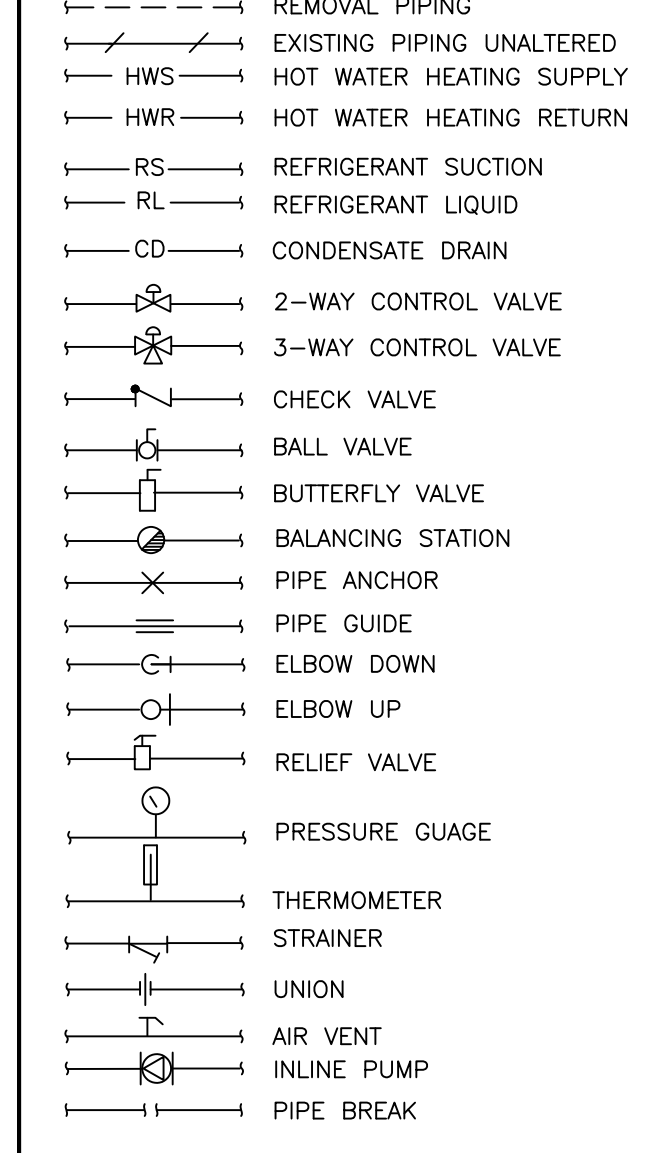
NOTES:  
1. MAXIMUM UNIT STATIC PRESSURE INCLUDES: THE SP. DROP THRU THE BOX AT FULL AIR FLOW AS WELL AS THE SP. DROP THRU THE REHEAT COIL AT FULL AIR FLOW IN INCHES W.G.  
2. HEATING COIL CAPACITY IS DETERMINED AT MINIMUM HEATING BOX CFM AND INCLUDES SPACE HEAT LOSS PLUS REHEAT LOAD.  
3. BRANCH PIPING TO VAV'S SHALL BE 3/4" HWS/HWR.

REMARKS:  
1. BASED ON PRODUCT BY TRANE CO.  
2. SEE DETAIL 2M100 FOR INSTALLATION.  
3. UNIT SHALL HAVE 1/2" MATT INSULATION.  
4. UNIT SHALL HAVE 3-WAY VALVE.

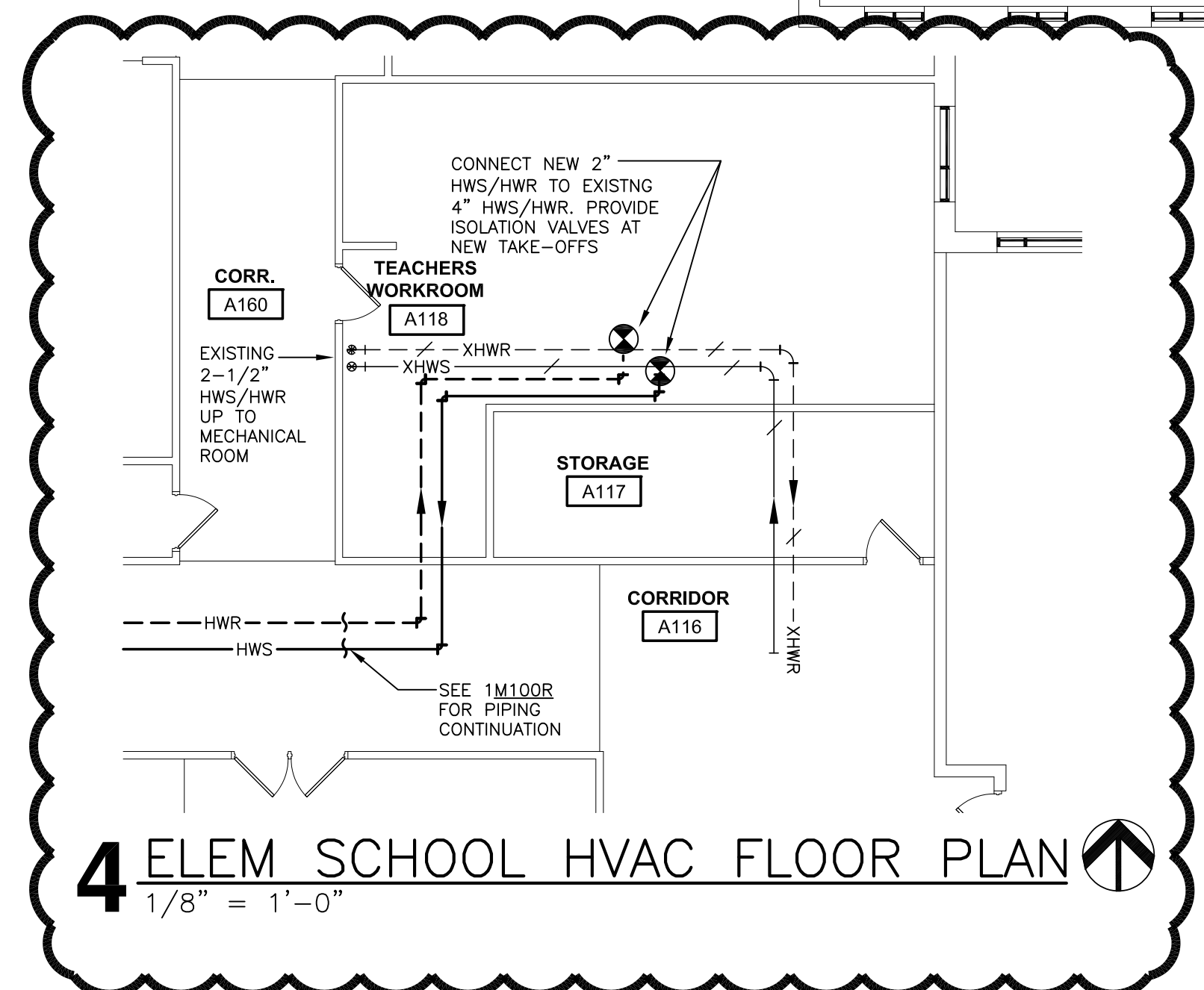
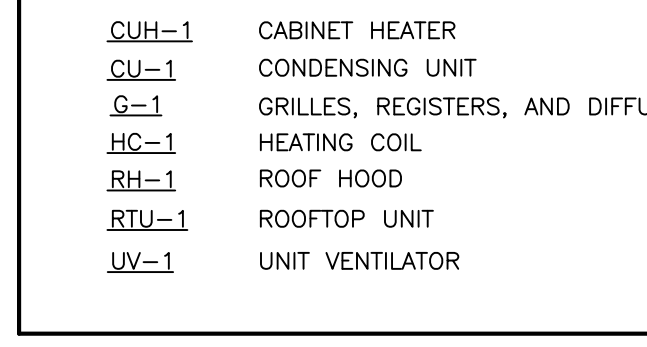
HVAC DUCTWORK SYMBOLS



HVAC PIPING SYMBOLS



HVAC ABBREVIATIONS



PUMPS

PUMP NO.	ROOM LOCATION	SERVES	TYPE	MODEL NO.	GPM	HEAD (FEET)	SIZE (INCHES)	MOTOR HP	REMARKS REF. NO.
CP-1	148	HEATING	YES	UPS 26-99FC	12	10	STD	16W (120/1)	1,2

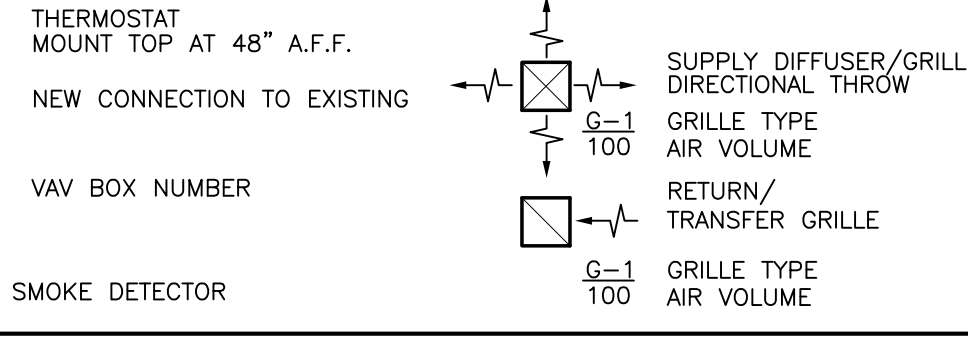
REMARKS:  
1. BASED ON PRODUCT BY GRUNDFOS.  
2. SEE DETAIL 2M100 FOR INSTALLATION.

AIR DISTRIBUTION DEVICES

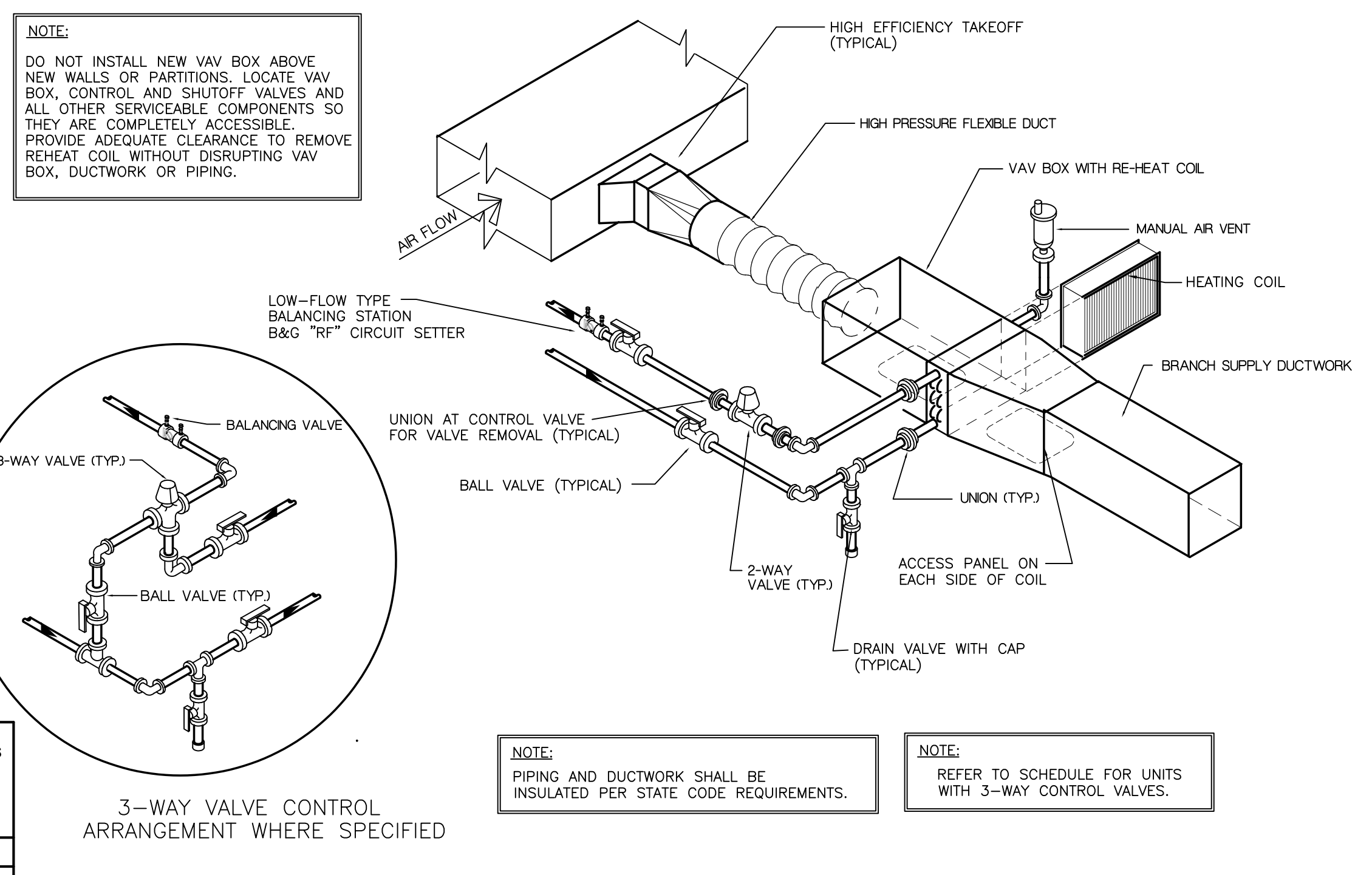
UNIT REF.	FIXTURE TYPE	SIZE	LOCATION	DAMPER	INLET SIZE	MODEL NUMBER	MOUNTING	REMARKS REF. NO.
G-1	SUPPLY	24 X 24	CEILING	NO	12"	SERIES PLO 4-WAY	LAY-IN	1,2
G-2	SUPPLY	24 X 24	CEILING	NO	8"	SERIES PLO 4-WAY	LAY-IN	1,2
G-3	SUPPLY	24 X 24	CEILING	NO	10"	SERIES PLO 4-WAY	LAY-IN	1,2
G-4	RETURN	24 X 8	CEILING	---	N/A	EGG-5 1/2" EGG CRATE	LAY-IN	1,3
G-5	RETURN	24 X 12	CEILING	---	N/A	EGG-5 1/2" EGG CRATE	LAY-IN	1,3
G-6	RETURN	24 X 24	CEILING	---	N/A	EGG-5 1/2" EGG CRATE	LAY-IN	1,3

REMARKS:  
1. BASED ON PRODUCT BY KRUEGER  
2. DIFFUSERS SHALL BE STEEL CONSTRUCTION  
3. DIFFUSERS SHALL BE ALUMINUM CONSTRUCTION

HVAC SYMBOLS



1 ELEMENTARY SCHOOL HVAC FLOOR PLAN. Scale: 1/8" = 1'-0"



3 HOT WATER COIL DETAIL 2-WAY. Scale: NTS

